



PASSPORT

Your guide to
historic sites,
museums,
and more!





THIS PASSPORT
BELONGS TO:

ABOUT CENTRE COUNTY EXPLORERS

Centre
Historical

Centre County has a rich collection of historic and cultural sites, each with its own story. The Centre County Explorers Passport describes these sites — historic houses, museums, galleries, parks — and encourages you to visit and enjoy them. You will learn more about our county's historic, cultural and natural resources. And in turn, you'll be helping the communities that you visit by shopping, staying or enjoying the local cuisine.

Published by the Centre County Historical Society, this Passport will be updated periodically. Please send any feedback to info@centrecountyhistory.org or call 814-234-4779.

If you find this Passport, it may be returned to the Centre Furnace Mansion at 1001 E. College Avenue, State College, PA 16801.

The Centre County Explorers driving map is a companion publication to support your adventures. It is a folded map available at the Centre Furnace Mansion in State College or online as a PDF at centrehistory.org/passport.

WHEN PLANNING YOUR VISITS

- Remember to check ahead for individual site hours, admission fees and group reservation information.
- Make a note of the date and time that you visit and anything you learn or experience at the site.
- After visiting all of the sites in the passport booklet, you can pick up a gift for completing your journey at the Centre Furnace Mansion in State College.

Participants may share their photos of Centre County historical and cultural sites and photos of them having fun exploring Centre County. Share your photographs, stories, favorite memories with us at:

Website: CentreHistory.org/explore

Facebook: facebook.com/centrefurnace

Twitter: @CentreHistory

Instagram: @centre.county.history

E-mail: info@centrecountyhistory.org

CENTRE COUNTY FUN FACTS

- The first wood screws in the U.S. were manufactured in Philipsburg in 1821. The screws were prepared by a “rolling and drawing apparatus” from iron manufactured at a nearby forge. The screw factory was built and owned by Hardman Philips.
- In 1792, the first charcoal iron furnace in Centre County was put into blast at Centre Furnace. Revolutionary war veterans Samuel Miles and John Patton established this furnace and its supporting village just north of Mt. Nittany, in an area rich with iron ore.
- Centre Furnace owner James Irvin’s longest lasting contribution to the economic well-being of Centre County was not iron, but the support of agriculture and education. In 1855, Irvin’s offer of Centre Furnace land helped convince the Pennsylvania Agricultural Society to build the Farmers’ High School of Pennsylvania here. The Farmers’ High School is now known as The Pennsylvania State University.
- Bellefonte native Anna W. Keichline® was Pennsylvania’s first woman registered as an architect in 1920. She invented the “K Brick,” predecessor to the modern hollow concrete block. She designed homes and buildings in Bellefonte, throughout central Pennsylvania, and other states.
- In 1892, the Bellefonte Central Railroad connected the county seat of Bellefonte and State College. The trip at that time took one hour and fifteen minutes.
- The town of State College grew from a small assemblage of homes located across the road from the main building of the Farmers’ High school which was chartered in 1855. State College officially became a borough in 1896 and opened for instruction in 1859.

- The town of Bellefonte produced seven governors, two of whom were in office at the same time. John Bigler was Governor of California and William Bigler was Governor of Pennsylvania from 1852 to 1855. Both brothers had been involved with local newspapers in Bellefonte.
- According to legend, centuries ago the Seneca Indians discovered the natural landmark now known as Penn's Cave. Indians and early explorers used the dry rooms for shelter. In 1885, Penn's Cave opened as a commercial show cavern and the Penn's Cave Hotel was built.
- Aaronsburg was founded by Jewish immigrant Aaron Levy in 1786. He donated land for Reformed and Lutheran churches and presented them with a communion set. In 1949, a daylong event was held honoring this gesture of religious tolerance.
- Centre County is geographically the 5th largest county in Pennsylvania.
- In Centre County during the 1930s, the Civilian Conservation Corps had camps at Poe Valley, Penn Roosevelt, McCalls Dam, Kato and Black Moshannon. Many state parks are a result of their work.
- The first car built in Centre County was made by R. Bierly and Sons Carriage Makers of Milesburg. It made its initial run down Pike Street in May of 1901. Bellefonte was one of the first towns in the United States to have electricity. In 1883, the Edison Company laid out plans for providing the town with electric lights.
- Fisherman's Paradise, located near Bellefonte on Spring Creek, is a project of the Pennsylvania Fish Commission. In the 1950s it was reported that more than 35,000 fishermen visited annually with more than 75,000 trout caught each year.

- Almost every county in the country has at least one place listed in the National Register of Historic Places. Centre County has 60 including 15 Historic Districts. For a listing of these sites, visit CentreHistory.org/NR.
- In Centre County there are 10 boroughs and 25 townships.
- One of the top employers in Millheim in the late 1800s was the Millheim Hosiery Mill. The factory was built in the late 1880s and operated until 1905. It was renamed and operated again until 1926.

For more fun facts, pick up the **Centre County Explorers** driving map at the Centre Furnace Mansion or the at one of the Happy Valley Adventure Bureau locations.

To easily access links for Passport sites, go to CentreHistory.org/passport.



CENTRE REGION



Art Alliance of Central Pennsylvania Gallery

The Art Alliance of Central Pennsylvania features gallery shows and classes for children, teens and adults. The Gallery Shop next door has fine art and crafts by Central Pennsylvania artists.



818 Pike Street
Lemont, PA 16851
(814) 234-2740
artalliancepa.org

DATE VISITED

Boalsburg Heritage Museum



The Boalsburg Heritage Museum is located in the Boalsburg Historic District on the National Register of Historic Places. The museum captures the history of the

village of Boalsburg through exhibits, historic furnishings and artifacts, publications, events and presentations. Visitors can tour displays at the 1825 House, including the Summer Kitchen with a beehive oven and the historic "Light House" that supplied electric light to Boalsburg from 1914 to 1930. Gardens and a barn with antique wagons and carriages are also featured.

304 East Main Street
Boalsburg, PA 16827
(814) 466-3035
boalsburgheritagemuseum.org
boalsburgheritagemuseum@gmail.com

DATE VISITED

Central Pennsylvania Festival of the Arts



The annual Central PA Festival of the Arts is a professionally juried Sidewalk Sale and Exhibition with several live music venues that takes place in the Borough of State College and adjacent

University Park campus of The Pennsylvania State University. It is held for five days, from Wednesday through Sunday in early July.

403 South Allen Street #205A
State College, PA 16801
(814) 237-3682
arts-festival.com

DATE VISITED

Centre Furnace Mansion

National Register of Historic Places since 1979



Centre Furnace Mansion, home to Centre County Historical Society, is a beautifully restored and furnished 19th century ironmaster's mansion. The Mansion and iron furnace stack grace several acres of period inspired landscaped

grounds and gardens. Established in 1791, Centre Furnace was the first charcoal iron furnace in the area that later became Centre County. In 1855, 400 acres of partially donated Centre Furnace land became home to The Farmers' High School of Pennsylvania, now the Pennsylvania State University. The Mansion hosts year-round programming and public tours.

1001 East College Avenue
State College, PA 16801
(814) 234-4779
centrehistory.org

DATE VISITED

Columbus Chapel and Boal Mansion Museum

National Register of Historic Places since 1978



The Boal Estate was home to the Boal family for eight generations and over 200 years. The original buildings and furnishings remain. In the 1890s, the 4th generation, Colonel

Theodore Davis Boal married Mathilde, a descendant of Christopher Columbus and heir to the Columbus Chapel. She brought it to Boalsburg from Spain in 1909.

163 Boal Estate Drive
Boalsburg, PA 16827
(814) 466-6210
boalmuseum.com

DATE VISITED

Discovery Space Children's Science Museum

An interactive science center designed for children and families to visit and learn together in a fun environment.



1224 North Atherton Street
State College, PA 16803
(814) 234-0200
DiscoverySpace.org

DATE VISITED

The Granary and Lemont Historic District

National Register of Historic Places since 1979



The 1885 John I. Thompson Grain Elevator and Coal Sheds (The Granary) was built by his father, Moses Thompson, adjacent to the Lewisburg and Tyrone Railroad and

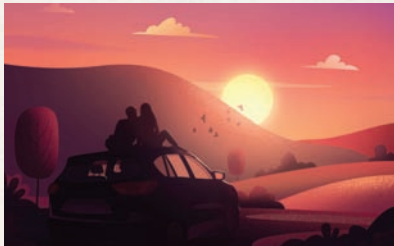
rehabilitated by the Lemont Village Association. The Coal Sheds building, with original train tracks, received coal for local use. The separate Grain Elevator stored various grains for local use and shipment outside of Lemont. The property includes Lemont Village Green and Pavilion.

133 Mount Nittany Road
Lemont, PA 16851
lemontvillage.org

Schedule tours:
news@lemontvillage.org

DATE VISITED

The Happy Valley Adventure Bureau



Stay up-to-date with everything happening in Centre County at HappyValley.com. Stop in at any one of three locations: Downtown State College at 204 West

Beaver Avenue, in Bellefonte at the Historic Train Station at 320 West High Street and the Moshannon Valley Heritage Center, 22 North Front Street, Philipsburg.

204 West Beaver Avenue
State College, PA 16801
happyvalley.com
Local: (814) 231-1400
Toll Free: (800) 358-5466

DATE VISITED

Millbrook Marsh Nature Center

Enjoy the marsh ecosystem, walking trails, wildlife viewing areas, beautiful views, and a relaxing natural setting close to home!



548 Puddintown Road
State College, PA 16801
(814) 235-7819
crpr.org/millbrook-marsh-nature-center

DATE VISITED

Pennsylvania Military Museum

The Pennsylvania Military Museum is a state-owned museum dedicated to the military history of Pennsylvania. It recounts the story of Commonwealth citizens who served the U.S. in defense of the nation with a focus on the Spanish American War to the present.



51 Boal Avenue
Boalsburg, PA 16827
(814) 466-6263
pamilmuseum.org

DATE VISITED

The State Theatre

From high drama to children's musicals, from rock 'n' roll to live broadcasts from the Met, there is rarely a day without a show to be seen, a concert to be heard, or a laugh to be had at the historic State Theatre. It is a vibrant hub of music, cinema, and live performance in the cultural heart of downtown State College.



130 West College Avenue
State College, PA 16801
(814) 272-0606
thestatetheatre.org

DATE VISITED

The Arboretum at Penn State

In 1999, The Pennsylvania State University designated 370 acres as the site of the Arboretum. Visitors can stroll through



ten different gardens including one designed specifically for children. The Arboretum, including the gardens, is open for visitation every day from dawn until dusk and holds special programs throughout the year.

Corner of Park Avenue & Bigler Road
University Park, PA 16801
(814) 865-9118
arboretum.psu.edu

DATE VISITED

Earth and Mineral Sciences Museum and Art Gallery — Penn State

The museum creates exhibits using specimens and objects from its collections of earth materials (rocks, minerals, fossils, meteorites, industrial by-products), historic scientific equipment, and works from the Steidle Collection of American Industrial Art. The exhibits illustrate the history, art, and science of Pennsylvania, its extractive industries, and the role of the College of Earth and Mineral Sciences in earth, energy, and materials science research and teaching.



06 Deike Building (ground floor)
one block south of Pollock Road
on Burrowes Road
Penn State University Park Campus
museum@ems.psu.edu

DATE VISITED

Matson Museum of Anthropology — Penn State



Visit the most important destination in the region to learn about human history and world cultures! See our shared past told through fossil casts, experience ancient civilizations through archaeological materials,

and appreciate contemporary creativity through ethnographic objects and artworks.

208 Carpenter Building
University Park, PA 16802
(814) 865-3853
matson.psu.edu

DATE VISITED

The Nittany Lion Shrine

Penn State's Class of 1940 presented this sculpture of the school's mascot to the University in 1942. Carved by Heinz Warneke from a large block of Indiana limestone, the shrine is a popular setting for photographs by visitors and alumni.



Curtin Road and Burrowes Road
University Park, PA 16801
[psu.edu/this-is-penn-state/
nittany-lion-shrine](https://psu.edu/this-is-penn-state/nittany-lion-shrine)

DATE VISITED

Old Main

Old Main is Penn State's administrative hub and is one of its most distinctive landmarks. Featuring the Federal Revival style of architect Charles Z. Klauder, Old Main is also a gallery to Henry Varnum Poor's famous Land-Grant Frescoes that depict the University's founding and the history of its land-grant mission.



University Park, PA 16802
[blog.worldcampus.psu.edu/
the-history-of-old-main](http://blog.worldcampus.psu.edu/the-history-of-old-main)

DATE VISITED

Palmer Museum of Art — Penn State

Through its world-class collection, exhibitions, and programs, the free-admission Palmer Museum of Art at Penn State is a welcoming, inclusive, and vibrant venue for authentic arts



experiences. The innovative new museum at the Arboretum opens in spring 2024 with 15 permanent collection and five special exhibition galleries, first-time education and event spaces, and outdoor areas that will expand student, faculty, and public access to the Palmer Museum and Arboretum.

Bigler Road
University Park, PA 16802
(814) 865-7673
palmermuseum.psu.edu

DATE VISITED

Pasto Agricultural Museum — Penn State

The museum features unusual farm and household items dating from 4,000 BC to the 1940s — more than 6,000 years before electricity and modern mechanization! Visitors will



learn about early farm life as our nation grew, while gaining hands-on experience with the history of agriculture and household equipment by turning the cranks and moving levers.

Gate K
2710 West Pine Grove Road
Pennsylvania Furnace, PA 16865
(814) 863-1383
agsci.psu.edu/pasto

DATE VISITED

Penn State All Sports Museum



At the Penn State All-Sports Museum visitors can explore the athletic's history and heritage of one of the greatest universities in the nation. Located at Penn State's Beaver

Stadium, this museum is an interactive, two-level testament to the world-class success and tradition of Penn State student-athletes in 31 varsity sports.

1 Beaver Stadium
University Park, PA 16802
(814) 865-0044
gopsusports.com/museum

DATE VISITED

UPPER AND LOWER BALD EAGLE VALLEY



Advent Church and Cemetery

National Register of Historic Places since 2022



Built in 1849 with hand-hewn logs and restored in 1989 by the Advent Historical Society, the church and adjacent Advent Cemetery document the families of farmers and iron workers who settled the area in the 1800s. The society hosts weddings, funerals, and

special events including a Memorial Day celebration and music series. Tours can be arranged by appointment.

1303 Moose Run Road
Milesburg, PA 16823
(717) 585-3226
adventhistoricalsociety.org

DATE VISITED

The Crooked House at Homecoming Park



The Crooked House is a life-size (16.5 ft x 22.5 ft) concrete sculpture of a historic house. It is only five feet from the sidewalk on a main street in Milesburg, PA — bringing a piece of contemporary art to the everyday life of Milesburg residents. The front preserves the details of the house and the back incorporates handprints and mementoes from the 1850s and today.

204 Market Street
Milesburg, PA 16853
(814) 933-5204
thecrookedhouse.net

DATE VISITED

Curtin Village at Eagle Ironworks

National Register of Historic Places since 1971



Curtin Village at Eagle Ironworks is one of Central Pennsylvania's best preserved state-owned historical sites. It was part of a large iron plantation operated by Roland Curtin and his family from 1810

to 1921. The site includes: the waterwheel-powered Pleasant Furnace (built in 1848); 19th century machines and tools; and the Curtin Family Mansion and workers' village. It is managed by the Roland Curtin Foundation.

215 Curtin Village Road
Howard, PA 16841
(814) 355-1982
curtinvillage.com

DATE VISITED

Milesburg Museum & Historical Society



Located in the Hannah Green Meeting House, Circa 1793. Milesburg Museum houses artifacts and genealogy resources from the Milesburg area. Special events are held throughout the year.

205 Market Street
Milesburg, PA 16841
Milesburg.org
For information email:
milesburghistory@gmail.com

DATE VISITED

MOSHANNON VALLEY & MOUNTAINTOP REGION



The John Henry Simler House



The log cabin built around 1807 is the oldest building in Philipsburg — situated within the Philipsburg Historic District, and placed on the National Register of Historic Places. The house

defines the beginning of the District's period of significance. It was built by one of the first settlers of Philipsburg. The cabin was restored in 2001 and is open for tours during limited hours primarily during the summer months and by appointment.

100 North Second Street
Philipsburg, PA 16866

For information, contact through:
[facebook.com/
PhilipsburgHistoricalFoundation](https://www.facebook.com/PhilipsburgHistoricalFoundation)

DATE VISITED

Lions David House Heritage Museum



The David House was originally designed and constructed in the late 1880s by the Lehigh Valley Coal Company to provide housing for its workers. Jenkin Reese David, a Welsh telegrapher for the

company, moved into the residence shortly after its completion. It houses the Mountaintop Area's only public heritage collection.

206 North 4th Street
Snow Shoe, PA 16874
(814) 387-4200
david-house-museum.org

DATE VISITED

Philipsburg Heritage Days

Held annually in mid-July, this week-long community festival celebrates that town and history of Philipsburg. Live music, a variety of vendors, children's activities, a car show, and a parade provide entertainment for the whole family.



PO Box 631
4 North Centre Street
Philipsburg, PA 16866
(814) 342-3440
philipsburgheritedays.com

DATE VISITED

Rowland Theatre

National Register of Historic Places since 1979



The Rowland Theatre is an historic single screen movie theater, built in 1917 by Charles Hedding Rowland. After Rowland's death, new owners did a major restoration in the Art Deco style in the 1930s making the Rowland the most ornate and elegant theater in Centre County. The theater shows current movies nightly.

127 North Front Street
Philipsburg, PA 16866
(814) 342-0477
rowlandtheatre.com

DATE VISITED

Union Church & Burial Ground/ The Old Mud Church

National Register of Historic Places since 1978



Used by many denominations, this church served a growing community as a church, school, and meeting hall from 1820 until the early 1920s.

The cemetery is surrounded by a three-foot stone wall and contains a 400-year-old white oak known as the “Founder’s Oak.” The oldest grave is dated 1819. The church is open during the summer for

tours and by appointment. It is also rented out for weddings.

607 East Presqueisle Street
Philipsburg, PA 16866
phf1797.com

Contact through: [facebook.com/
philipsburghistoricalfoundation](https://www.facebook.com/philipsburghistoricalfoundation)

DATE VISITED

NITTANY VALLEY REGION



Bellefonte Art Museum of Centre County



Built in 1810, the Linn House, home of the Bellefonte Art Museum, was built from Trenton Limestone and is listed on the Historic American Buildings Survey. Works of local artists, cultural art

and local collections are featured. An Underground Railroad exhibit “A Journey to Freedom” remembers the role of our region in the operations of the Underground Railroad. The exhibitions include a permanent display commemorating enslaved persons seeking freedom on the Underground Railroad. A small room in the attic has been identified as a place “Underground” travelers hid for safety.

133 North Allegheny Street
Bellefonte, PA 16823
(814) 355-4280
bellefontemuseum.org

DATE VISITED

Bellefonte Train Station and Visitors Center



Home to the Bellefonte office of the Happy Valley Adventure Bureau and the Bellefonte Intervalley Area Chamber, the Bellefonte Railroad Passenger Station was built in 1889 as part of the Pennsyl -

vania Railroad, but was used by the Bellefonte Central and other railroads. Stop in for free information about Bellefonte's attractions, businesses, organizations, services, and events including a walking tour map.

320 West High Street
Bellefonte, PA 16823
(814) 355-2917
bellefontechamber.org

DATE VISITED

Centre County Library and Historical Museum, Miles-Humes House

National Register of Historic Places since 1976



The early 19th-century Georgian style Miles-Humes House located in Bellefonte is home to a museum dedicated to local history. The Miles-Humes House is also home to the Pennsylvania

Room, a specialized historical and genealogical research library with collections that include original Centre County records, church and cemetery records, a genealogical reference collection, and more.

203 North Allegheny Street
Bellefonte, PA 16823
(814) 355-1516, ext. 214
centrecountylibrary.org/historical-museum

DATE VISITED

Pennsylvania Match Factory, American Philatelic Society



Founded in 1886, the American Philatelic Society serves collectors, educators, postal historians, and the general public by providing a wide variety of programs and services.

Its headquarters is located at the “Match Factory,” a rescued and beautifully repurposed set of grand old buildings that once housed the Pennsylvania Match Company factory (1900–47). This facility now includes the APS Research Library and the historic Headsville, West Virginia, Post Office, originally housed in the Smithsonian National Museum of American History, Washington D.C. Tours are available.

100 Match Factory Place
 Bellefonte PA, 16823
 (814) 933-3803
 stamps.org

DATE VISITED

Victorian Bellefonte

National Register of Historic Places since 1977

The Bellefonte Historic District features many examples of stunning Victorian architecture, which are highlighted on a walking tour map. Bellefonte was the home of seven governors and became the most influ-



ential town between Pittsburgh and Harrisburg. Visitors and residents can explore a variety of shops and restaurants. Talleyrand Park along Spring Creek offers a playground, picnic tables, a large green space, and live music in the summer.

DATE VISITED

Bellefonte, PA 16823
 bellefontearts.org

PENNS VALLEY REGION



The Centre County Grange Encampment and Fair

Beginning in 1874 as the “Grangers’ Pic-nik,” the Centre County Grange Encampment and Fair is unlike any other county fair — the only remaining tenting fair in America. It includes 1,000 tents and 1,500 RVs which create a community within the fairgrounds. Visitors enjoy hundreds of concessions, over 7,000 exhibit items, amusement rides, livestock exhibits, tractor pulling, and much more!



169 Homan Lane / PO Box 271
Centre Hall, PA 16828
(814) 364-9212
grangefair.com

DATE VISITED

Green Drake Gallery and Arts Center



Located in the Millheim Historic District, the Green Drake Gallery is an art gallery, a collection of artist studios, a music venue, a creative center for learning, and a community gathering place.

101-B West Main Street
Millheim, PA 16854
(484) 477-2109
greendrakeart.com

DATE VISITED

Penn's Cave and Wildlife Park

National Register of Historic Places since 1976

In 1855, Penn's Cave opened as a commercial show cavern, and the Penn's Cave Hotel was built. At the Nation's only all-water cavern and farm wildlife park,



visitors can enjoy a cavern tour entirely by boat, a ride through the farm wildlife park and other family-friendly activities.

222 Penns Cave Road
Centre Hall, PA 16828
(814) 364-1664
pennscave.com

DATE VISITED

Rhoneymeade Arboretum and Sculpture Garden / The Leonard Rhone House



Rhoneymeade, or “Rhone’s Meadow,” is the farm once owned by Leonard Rhone, originator of the Grange Fair. His 1853 Georgian brick farm mansion sits proudly in an Arboretum and

Sculpture Garden, open to the public during posted hours. Visitors also enjoy the hilltop views of 150 scenic acres of easement protected — farm fields and hedgerows, as well as the expansive scenery of Penns Valley and beyond.

177 Rimmey Road
Centre Hall, PA 16828
rhoneymeade.org
(814) 571-2401

DATE VISITED

Penns Valley Area Historical Museum — Rudy-Corman Building

The museum is located in the Rudy-Corman Building on the main street in Aaronsburg. The museum offers tours featuring local history, assistance to family historians, community programs, and more.



244 West Aaron Square
Aaronsburg, PA 16820
(814) 349-4811
pennsvalleymuseum.org

DATE VISITED

PARKS & NATURAL AREAS



Bald Eagle State Park



Bald Eagle State Park features a 1,730-acre reservoir, the result of the Foster Joseph Sayers Dam, that is surrounded by forests, fields, and wetlands. It features two campgrounds, boating, fishing, swimming, the Nature Inn, and excellent wildlife watching.

149 Main Park Road
Howard, PA 16841
(814) 625-2775
[dcnr.pa.gov/stateparks/findapark/
baldeaglestatepark](http://dcnr.pa.gov/stateparks/findapark/baldeaglestatepark)

DATE VISITED

Bear Meadows Natural Area

National Natural Landmark since 1965

Located within the Rothrock State Forest in the Appalachian Mountains and near Tussey Mountain Ski Area, Bear Meadows contains a bog surrounded by steep mountains and hiking trails. The bog, which covers 320 acres, has been forming since the end of the last glacial period 10,000 years ago.

Rothrock State Forest District Office
(814) 643-2340
dcnr.pa.gov/stateforests/findaforest/
Rothrock (*and search for Bear Meadows*)

DATE VISITED

Black Moshannon State Park Historic Districts

National Register of Historic Places since 1987

At the top of the Allegheny Plateau, the Black Moshannon State Park Historic Districts offer visitors a lake for swimming and canoeing, hiking trails, and a boardwalk for bird-watching and exploring the plants of the bog and surrounding forests. Extend your stay in either modern facilities or rustic cabins built by the Civil Conservation Corps during the Great Depression of the 1930s.

4216 Beaver Road
Philipsburg, PA 16866
(814) 342-5960
dcnr.pa.gov/stateparks/findapark/blackmoshannonstatepark

DATE VISITED

Mount Nittany/Mount Nittany Conservancy

Over 800 acres are preserved and maintained on beautiful iconic Mount Nittany. There are nearly nine miles of trails and many scenic views. A vigorous hike brings you to a great overlook of State College, the Penn State campus, and the surrounding countryside.

Mount Nittany Road
Lemont, PA 16851
mtnittany.org

DATE VISITED

Poe Valley and Poe Paddy State Parks

Poe Valley and Poe Paddy State Parks are tucked into a mountain valley surrounded by endless forests. In the mid-1930s, the Civilian Conservation Corps (CCC) built camp S-63-PA, which housed 200 young men who created the park and built many of the roads. Visitors today can enjoy picnicking, hiking, swimming, camping, fishing, and boating.

136 Poe Valley Park Circle
Coburn, PA 16832
(814) 349-2460
dcnr.pa.gov/stateparks/findapark/
poevalleystatepark

DATE VISITED

Spring Creek Canyon

Located on rock formations created over 500 million years ago, the canyon is rich in natural, agricultural and industrial history. It is now home to hiking and bike trails between Benner Spring and Fisherman's Paradise and some of the finest wild brown trout fishing in Pennsylvania.

State Game Lands 333 Parking Area
Bellefonte, PA 16823
centredoutdoors.org/visit/
Spring-Creek-Canyon-Trail

DATE VISITED

Scotia (State Game Land 176)

The iron ore-mining town of Scotia was established by steel magnate Andrew Carnegie. The site has been reclaimed by the Pine Barrens, leaving only a scattering of iron ore, hidden foundations, and curious visitors. Scotia iron ore pits provided work for a bustling mining town of some 400 people. Today, hikers, bikers, and bird watchers enjoy the varied landscape.

Scotia Range Road
Port Matilda, PA 16870
pahikes.com/blogs/scotia-barrens

DATE VISITED



CENTRE COUNTY Encyclopedia of History & Culture

The Centre County Encyclopedia of History & Culture, an online resource sponsored by the Centre County Historical Society. The encyclopedia provides an authoritative look at the county's past. It explores the county's history and culture, in all its variety, through topics and themes. It debuted on October 3, 2021, with 101 articles and new content is added monthly.

CentreHistory.org/encyclopedia

We thank the following for their support



This project is made possible in part through a grant provided by the Centre County Board of Commissioners and The Happy Valley Adventure Bureau.



This project is being financed in part by a grant from the Community Conservation Partnerships Program (C2P2), Environmental Stewardship Fund, under the administration of the Pennsylvania Department of Conservation and Natural Resources Bureau of Recreation and Conservation.



Design: David Lembeck • Illustration: Jeff Mathison



DEPARTMENT OF INLANDS
AND
BUSINESS REFERENCE

POPULATION

1870	1,000
1880	1,200
1890	1,500
1900	2,000
1910	2,500
1920	3,000
1930	3,500
1940	4,000
1950	4,500
1960	5,000
1970	5,500
1980	6,000
1990	6,500
2000	7,000
2010	7,500
2020	8,000

INDUSTRY AND COMMERCE

1870	100
1880	150
1890	200
1900	250
1910	300
1920	350
1930	400
1940	450
1950	500
1960	550
1970	600
1980	650
1990	700
2000	750
2010	800
2020	850



CENTRE COUNTY HISTORICAL SOCIETY
 Centre Furnace Mansion
 1001 East College Avenue • State College, PA 16801
 814-234-4779 • centrehistory.org